

PRODUCT
CODE

7E332008

7E332009

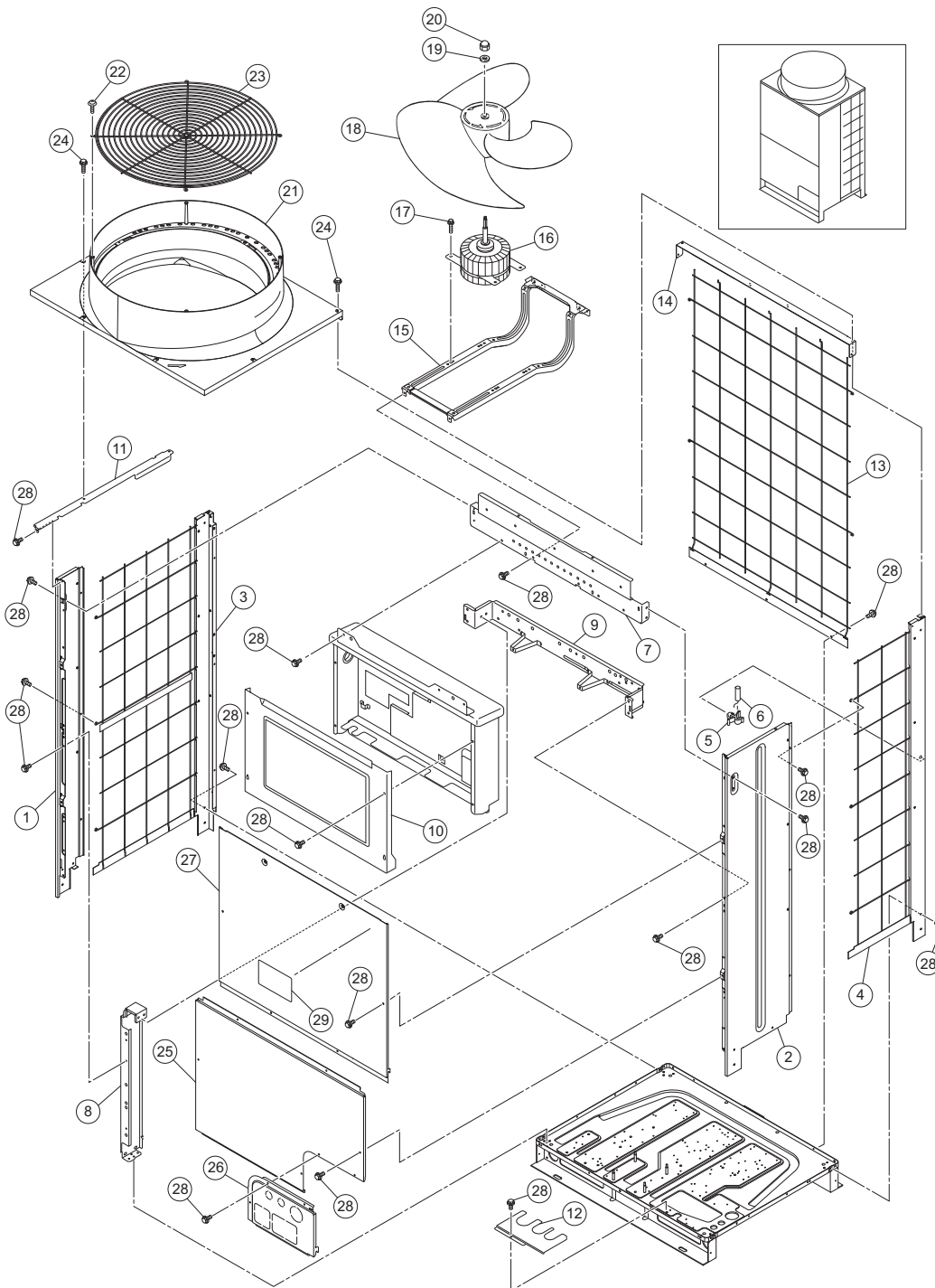
MODEL NAME








RAS-5FSXNHE

RAS-6FSXNHE

No.	DESCRIPTION	DWG No.	PART No.	Qty	Qty	REMARKS
1	Side Cover R	17B41356 A	P28528	1	1	
2	Side Cover L	17B41355 A	P28527	1	1	
3	Side Cover L2 Assy	XEK24767 A	E03902	1	1	
4	Side Cover R2 Assy	XEK24766 A	E03903	1	1	
5	Th Holder	17D55179 A	E03089	1	1	for Ta Thermistor
6	Thermistor	17C59663 A	P22520	1	1	THM7: for Ambient (Ta)
7	Stay	17F03717 A	P29747	1	1	
8	Support Stay Assy	17H16044 A	E03904	1	1	
9	D Fix S Assy	XEK24256 A	E03091	1	1	
10	E-Box Cover	XEK24212 B	E03905	1	1	
11	Upper Stay	17F04003 A	E03092	1	1	
12	Piping Cover	17H06168 A	E03095	1	1	
13	Protection Net	17F10841 A	P29575	1	1	
14	Stay	17H18662 A	P29577	1	1	
15	Clamp Unit	XEK24213 A	E04004	1	1	
16	Fan Motor	17A21335 A	P29980	1	1	MOF1
17	Screw	17D30320 H	P29749	4	4	SUS, M6, for Fan Motor
18	Propeller Fan	17A21604 A	P28483	1	1	Ø644
19	Washer	17E08525 E	P23249	1	1	SUS
20	Closing Nut	17D50034 D	P23248	1	1	SUS, M10
21	Upper Cover M	17A15175 A	E01226	1	1	
22	Screw	464M0416	P29372	4	4	SUS, M4
23	Outlet Protector	17C58631 B	P24215	1	1	
24	Screw	17G84611 D	P27991	6	6	SUS, M5
25	Front Cover M2	XEK12297 A	E03906	1	1	
26	Pipe Cover 2	XEK24747 A	E03907	1	1	
27	Service Cover M	XEK12079 A	P28490	1	1	
28	Screw	17H12637 A	P25678	29	29	SUS, M5
29	Hitachi Label	XEK34697 B	E03099	1	1	

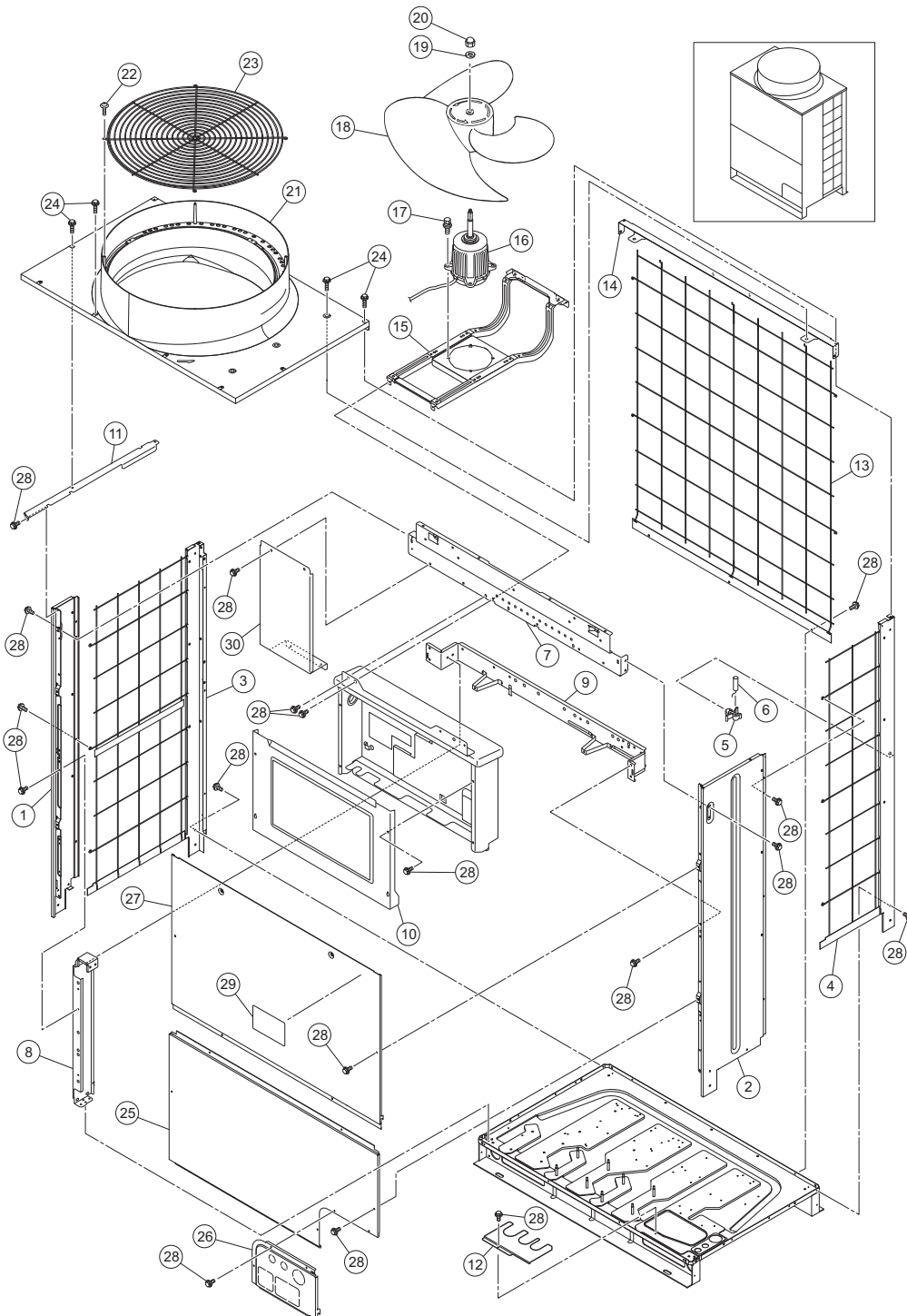
No.	DESCRIPTION	DWG No.	PART No.	PRODUCT CODE			REMARKS	
				MODEL NAME	7E332010	7E332011		7E332012
1	Side Cover R	17B41356 A	P28528	RAS-8FSXNHE	1	1	1	
2	Side Cover L	17B41355 A	P28527	RAS-8FSXNHE	1	1	1	
3	Side Cover L2 Assy	XEK24767 A	E03902	RAS-10FSXNHE	1	1	1	
4	Side Cover R2 Assy	XEK24766 A	E03903	RAS-10FSXNHE	1	1	1	
5	Th Holder	17D55179 A	E03089	RAS-12FSXNHE	1	1	1	for Ta Thermistor
6	Thermistor	17C59663 A	P22520	RAS-12FSXNHE	1	1	1	THM7: for Ambient (Ta)
7	Front Stay	17F03718 A	E03100		1	1	1	
8	Support Stay Assy	17H16044 C	E03910		1	1	1	
9	D Fix L Assy	XEK24255 A	E03101		1	1	1	
10	E-Box Cover	XEK24212 B	E03905		1	1	1	
11	Upper Stay	17F04003 A	E03092		1	1	1	
12	Piping Cover	17H06168 A	E03095		1	1	1	
13	Protection Net	17F10842 A	P29576		1	1	1	
14	Stay	17H18663 A	P29578		1	1	1	
15	Clamp Unit	XEK24213 A	E04004		1	1	1	
16	Fan Motor	17A22169 A	P28768		1	1	1	MOF1
17	Screw	17D30309 E	P26970		4	4	4	SUS, M6, for Fan Motor
18	Propeller Fan	17A21604 A	P28483		1	1	1	Ø644
19	Washer	17E08525 E	P23249		1	1	1	SUS
20	Closing Nut	17D50034 D	P23248		1	1	1	SUS, M10
21	Upper Cover	17C79378 D	E04003		1	1	1	
22	Screw	464M0416	E03098		4	4	4	SUS, M4
23	Outlet Protector	17C58631 B	P24215		1	1	1	
24	Screw	17G84611 D	P27991		14	14	14	SUS, M5
25	Front Cover L2	XEK12298 A	E03912		1	1	1	
26	Pipe Cover 2	XEK24747 A	E03907		1	1	1	
27	Service Cover L	XEK12080 A	P28491		1	1	1	
28	Screw	17H12637 A	P25678		35	35	35	SUS, M5
29	Hitachi Label	XEK34697 B	E03099		1	1	1	
30	Fan Cover	17H05607 A	E04014		1	1	1	











A	Truss Head Tapping Screw		F	Stud Bolt	
B	Round Head Screw		G	Nut	
C	Flat Head Screw		H	Washer	
D	Pan Head Tapping Screw		J	Spring Lock Washer	
E	Hexagon Head Bolt		K	Toothed Lock Washer	

NOTE:

The unicomated coating is applied to iron and steel material for the unspecified materials of the bolt and screw.



A	Truss Head Tapping Screw		F	Stud Bolt	
B	Round Head Screw		G	Nut	
C	Flat Head Screw		H	Washer	
D	Pan Head Tapping Screw		J	Spring Lock Washer	
E	Hexagon Head Bolt		K	Toothed Lock Washer	

NOTE:

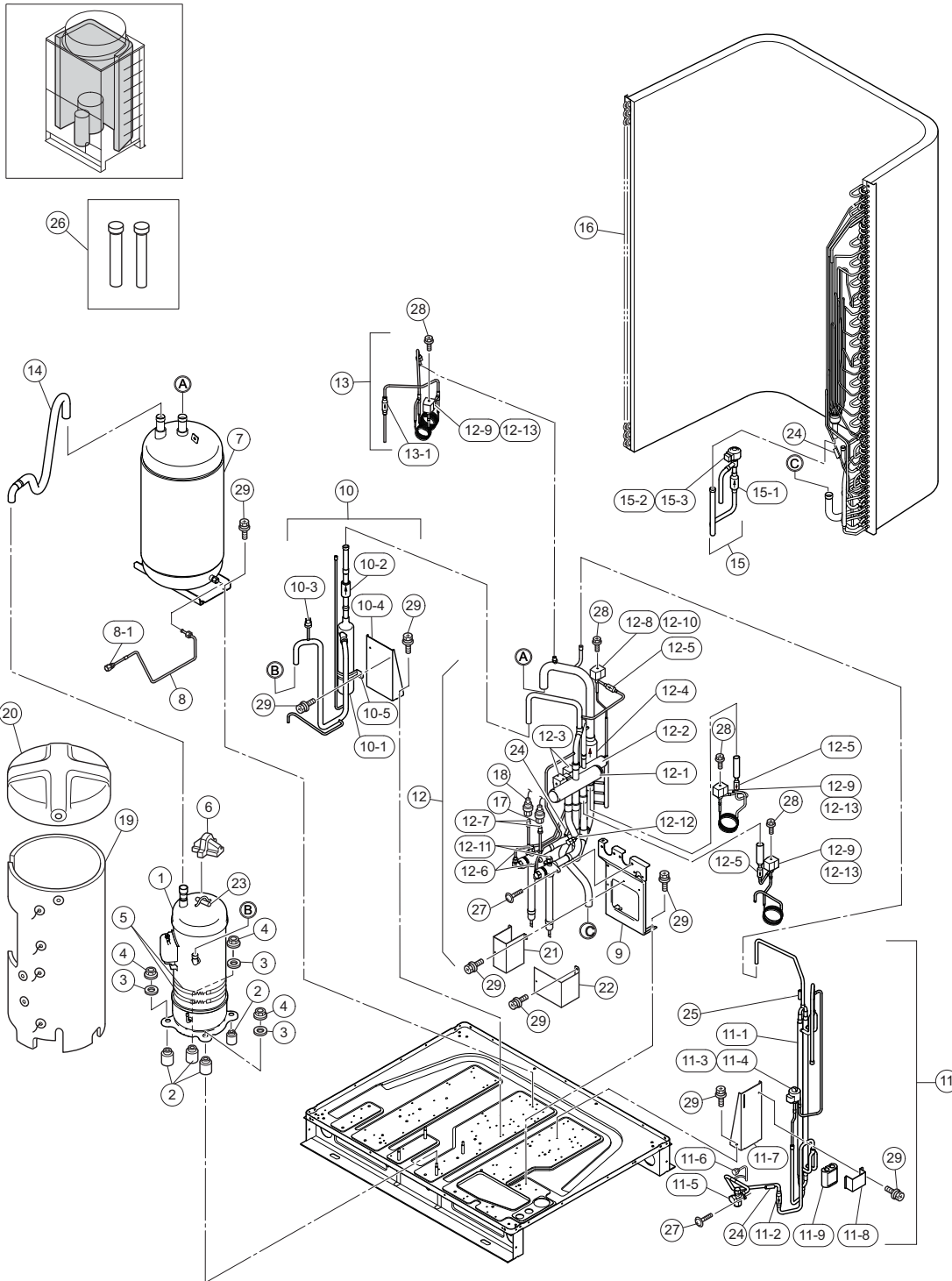
The unicomated coating is applied to iron and steel material for the unspecified materials of the bolt and screw.

No.	DESCRIPTION	DWG No.	PART No.	PRODUCT CODE		REMARKS
				MODEL NAME	Qty	
				RAS-5FSXNHE	7E332008	
				RAS-6FSXNHE	7E332009	
1	Compressor	17F10550 A	06934904	1	1	MC1: DA50PHD-D1YE2
2	Vibration Proof Rubber	17D21147 B	P28639	4	4	
3	Vibration Proof Rubber	17D21207 A	P13109	3	3	
4	Special Nut	17D49475 A	E02000	3	3	
5	Oil Heater	17F05909 A	P28538	2	2	CH1: 40.8W, Belt Heater
6	Rubber Cap	17B29767 A	P24397	1	1	
7	Accumulator	XEK12383 A	E03914	1	1	
8	Oil Pipe Assy	XEK37886 A	E03915	1	1	
8-1	Check Joint	17C75461 D	P29350	1	1	
9	Valve Stay	XEK24613 A	E03916	1	1	
10	D Pipe Unit	XEK12233 B	E04015	1	1	
10-1	Oil Separator	XEK24675 A	E03918	1	1	
10-2	Check Valve	17F08040 A	E04016	1	1	
10-3	Pressure Sw	XEK22551 A	P25043	1	1	PSH1: Saginomiya, ACB-1UB42
10-4	Stay For Oil Separator	17H06171 A	E03108	1	1	
10-5	Saddle	29ZF0051	E03109	1	1	
11	L Pipe Assy	XEK12286 A	E03919	1	1	
11-1	Double Tube	XEK38011 B	E03920	1	1	
11-2	Strainer	17D55178 A	P16943	1	1	
11-3	Exp. Valve	17C78465 A	P26007	1	1	MVB: Saginomiya, UKV-25D26
11-4	Coil For Exp. Valve	17C78180 C	E01369	1	1	MVB: Saginomiya, UKV-A035
11-5	S Valve 3/8	17F06326 A	P28918	1	1	3/8
11-6	Check Ja	17C75461 B	P25933	1	1	
11-7	Plate Stay	17H06172 A	E03115	1	1	
11-8	Plate Stopper	17E25685 A	E03116	1	1	
11-9	Rubber Sheet	17H10681 A	E03921	1	1	
12	4-Way Valve Assy	XEK12236 A	E03922	1	1	
12-1	4-Way Valve	17F06923 A	P29253	1	1	RVR1: Saginomiya, STF-H0712
12-2	4-Way Valve	17F06922 A	P29252	1	1	RVR2: Saginomiya, STF-H0404
12-3	Coil for 4-Way Valve	17F06925 A	P29697	2	2	RVR1, 2: Saginomiya, STF-H01A11870A1
12-4	Strainer	17G87733 B	P28508	1	1	
12-5	Strainer	17G62701 A	P25036	3	3	
12-6	Check Ja	17C75461 B	P25933	2	2	
12-7	PGC Joint	17C93010 B	P27887	2	2	
12-8	Body 20	17C64849 A	P24511	1	1	SVA: Nichiden Kougyou, SR10PA

No.	DESCRIPTION	DWG No.	PART No.	MODEL NAME		PRODUCT CODE	REMARKS
				RAS-5FSXNHE	RAS-6FSXNHE		
12-9	Solenoid Valve	17C77098 A	P25246	3	3	7E332008	SVF, SVG: Nichiden Kougyou, SR10D Before Serial No. 4KE84117
		17F13308 A	P30165	3	3	7E332009	SVF, SVG: Saginomiya Seisakusho, TEV-S. After Serial No. 4KE84117 (Included)
12-10	Coil For Solenoid Valve	17C76434 B	E03123	1	1		SVA: Nichiden Kougyou, SR10PA
12-11	Stop Valve(Gas)	17F09233 A	P29260	2	2		7/8
12-12	Check Joint	17C75461 C	E03124	1	1		
12-13	Coil For Solenoid Valve	17C76434 B	E03123	3	3		SVF, SVG: Nichiden Kougyou, SR10PA Before Serial No. 4KE84117
		17F13309 D	P30169	3	3		SVF, SVG: Saginomiya Seisakusho, TEV-S. After Serial No. 4KE84117 (Included)
13	Oil Return Pipe Assy	17F09314 A	P29258	1	1		for Return Oil. Before Serial No. 4KE84117
		17F09314 C	P30269	1	1		for Return Oil. After Serial No. 4KE84117 (Included)
13-1	Strainer	17D55178 A	P16943	1	1		
14	Pipe S1 Assy	17H15756 A	E03924	1	1		
15	Expansion Valve Assy	17H16037 A	E03925	1	1		
15-1	Strainer	17G62700 A	E01206	1	1		
15-2	Expansion Valve	17F07288 B	P29262	1	1		MV1: Saginomiya, PAM-BBOYGHS-1
15-3	Coil	17F07287 A	P29263	1	1		MV1: Saginomiya, PAM-MD12HS-7
16	Condenser Assy	XEK12239 A	E03926	1	1		
17	Pressure Sensor	17B46255 A	P26013	1	1		PD: Saginomiya, NSK-BH050F-417
18	Pressure Sensor	17B46256 A	P26014	1	1		PD: Saginomiya, NSK-BH020F-417
19	Sound proof Cover	17F09423 A	P29345	1	1		
20	Top Sound Proof Cover	17F12203 B	P29803	1	1		
21	Valve Cover 1	17H06228 A	E03093	1	1		
22	Valve Cover 2	17H06229 A	E03094	1	1		
23	Thermistor	17B24597 A	P22521	1	1		THM8: for Compressor (Td1)
24	Thermistor	17C59664 D	P23504	3	3		THM17, 11, 10: for Piping (Te, Tg, Tchg)
25	Thermistor	17C59664 E	P23507	1	1		THM23: for Piping (TBg)
26	Accessory Pipe	XEK37178 G	E04018	1			
26	Accessory Pipe	XEK37178 A	E03131		1		
27	Screw	17D30320 F	P25673	6	6		SUS, M6
28	Screw	17E19003 B	E03135	4	4		for Coil
29	Screw	17H12637 A	P25678	17	17		SUS, M5

No.	DESCRIPTION	DWG No.	PART No.	MODEL NAME			REMARKS
				RAS-8FSXNHE	RAS-10FSXNHE	RAS-12FSXNHE	
				PRODUCT CODE			
				7E332010	7E332011	7E332012	
Qty	Qty	Qty					
1	Compressor	17F10551 A	06954904	1	1	1	MC1: DA65PHD-D1YE2
2	Vibration Proof Rubber	17D21147 B	P28639	4	4	4	
3	Vibration Proof Rubber	17D21207 A	P13109	3	3	3	
4	Special Nut	17D49475 A	E02000	3	3	3	
5	Oil Heater	17F05909 A	P28538	2	2	2	CH1: 40.8W, Belt Heater
6	Rubber Cap	17B29767 A	P24397	1	1	1	
7	Accumulator	XEK12387 A	E04019	1	1	1	
8	Oil Pipe Assy	XEK37887 A	E03929	1	1	1	
8-1	Check Joint	17C75461 D	P29350	1	1	1	
9	Valve Stay	XEK24613 A	E03916	1	1	1	
10	D Pipe Unit	XEK12337 A	E04020	1	1	1	
10-1	Oil Separator	XEK24675 A	E03918	1	1	1	
10-2	Check Valve	17F08040 A	E04016	1	1	1	
10-3	Pressure Sw	XEK22551 A	P25043	1	1	1	PSH1: Saginomiya, ACB-1UB42
10-4	Stay For Oil Separator	17H06170 A	E03142	1	1	1	
10-5	Saddle	29ZF0051	E03109	1	1	1	
11	L Pipe Assy	XEK12338 A	E04021	1	1	1	
11-1	Double Tube Assy	XEK38011 A	E03934	1	1	1	
11-2	Strainer	17G62700 A	E01206	1	1	1	
11-3	Exp. Valve	17C78465 A	P26007	1	1	1	MVB: Saginomiya, UKV-25D26
11-4	Coil For Exp. Valve	17C78180 C	E01369	1	1	1	MVB: Saginomiya, UKV-A035
11-5	S Valve 3/8	17F06326 A	P28918	1	1	1	3/8
11-6	Check Ja	17C75461 B	P25044	1	1	1	
11-7	Plate Stay	17H06172 A	E03115	1	1	1	
11-8	Plate Stopper	17E25685 A	E03116	1	1	1	
11-9	Rubber Sheet	17H10681 A	E03921	1	1	1	
12	4-Way Valve Assy	XEK12339 A	E04022	1	1	1	
12-1	4-Way Valve	17F06923 A	P29253	2	2	2	RVR1, 2: Saginomiya, STF-H0712
12-2	Coil for 4-Way Valve	17F06925 A	P29697	2	2	2	RVR1, 2: Saginomiya, STF-H01AI1870A1
12-3	Strainer	17G87733 A	P27603	1	1	1	
12-4	Strainer	17G62701 A	P25036	3	3	3	
12-5	Check Ja	17C75461 B	P25044	2	2	2	
12-6	PGC Joint	17C93010 B	P27887	2	2	2	
12-7	Body 20	17C64849 A	P24511	1	1	1	SVA: Nichiden Kougyou, SR10PA

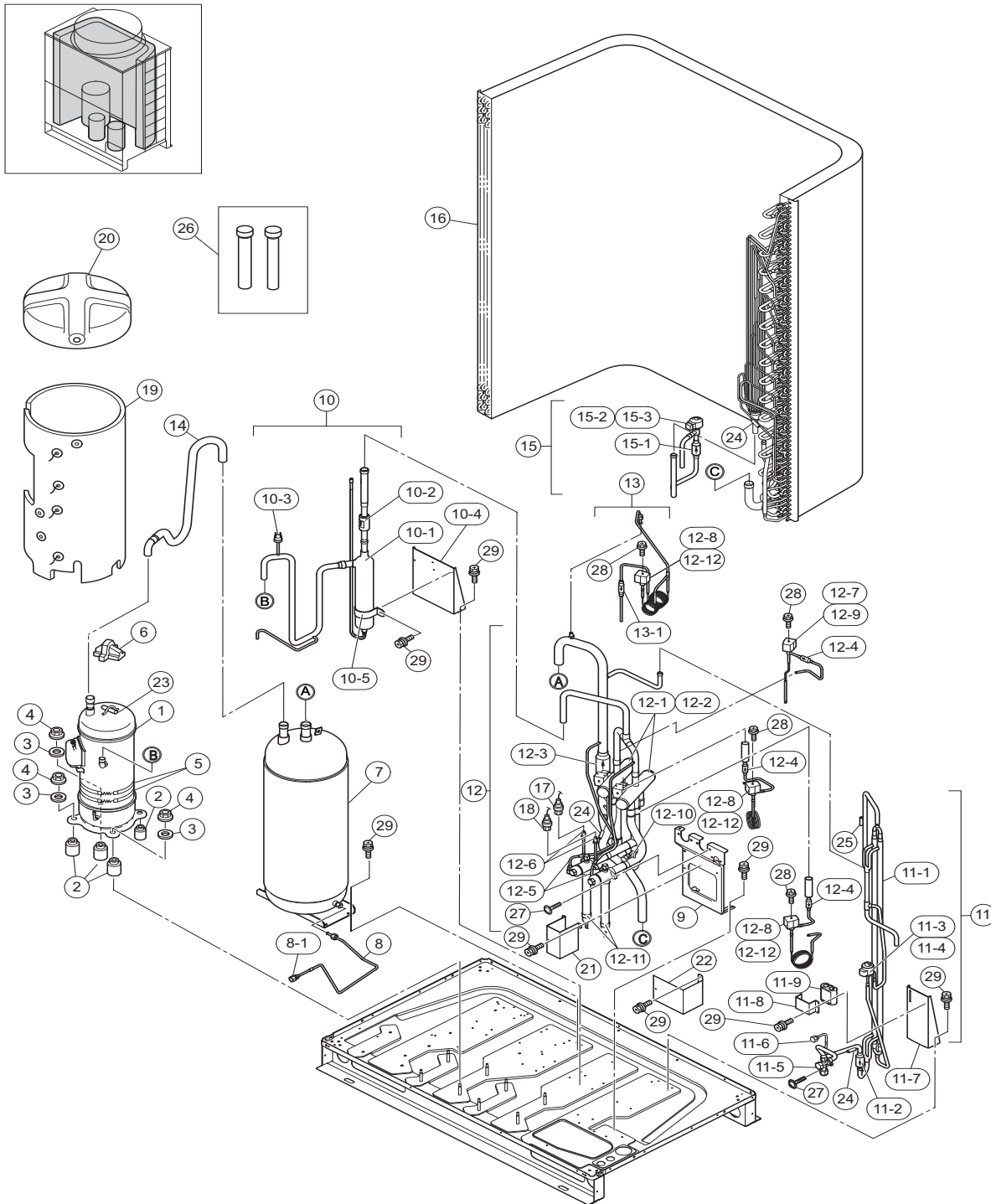
No.	DESCRIPTION	DWG No.	PART No.	PRODUCT CODE			REMARKS
				MODEL NAME	7E332010	7E332011	
12-8	Solenoid Valve	17C77098 A	P25246	3	3	3	SVF, SVG: Nichiden Kougyou, SR10D Before Serial No. 4KE84117
		17F13308 A	P30165	3	3	3	SVF, SVG: Saginomiya Seisakusho, TEV-S. After Serial No. 4KE84117 (Included)
12-9	Coil For Solenoid Valve	17C76434 B	E03123	1	1	1	SVA: Nichiden Kougyou, SR10PA
12-10	Check Joint	17C75461 C	E03124	1	1	1	
12-11	Stop Valve(Gas)	17F09233 A	P29260	2	2	2	7/8
12-12	Coil For Solenoid Valve	17C76434 B	E03123	3	3	3	SVF, SVG: Nichiden Kougyou, SR10PA Before Serial No. 4KE84117
		17F13309 D	P30169	3	3	3	SVF, SVG: Saginomiya Seisakusho, TEV-S. After Serial No. 4KE84117 (Included)
13	Oil Return Pipe Assy	17F09316 A	P29255	1	1	1	for Return Oil. Before Serial No. 4KE84117
		17F09316 C	P30267	1	1	1	for Return Oil. After Serial No. 4KE84117 (Included)
13-1	Strainer	17D55178 A	P16943	1	1	1	
14	Pipe S1 Assy	XEK38473 A	E04150	1	1	1	
15	Expansion Valve Assy	17H16037 A	E03925	1	1	1	
15-1	Strainer	17G62700 A	E01206	1	1	1	
15-2	Expansion Valve	17F07288 B	P29262	1	1	1	MV1: Saginomiya, PAM-BBOYGHS-1
15-3	Coil	17F07287 A	P29263	1	1	1	MV1: Saginomiya, PAM-MD12HS-7
16	Condenser Assy	XEK12240 A	E03940	1	1	1	
17	Pressure Sensor	17B46255 A	P26013	1	1	1	PD: Saginomiya, NSK-BH050F-417
18	Pressure Sensor	17B46256 A	P26014	1	1	1	PD: Saginomiya, NSK-BH020F-417
19	Sound Proof Cover	17F09423 A	P29345	1	1	1	
20	Top Sound Proof Cover	17F12203 B	P29803	1	1	1	
21	Valve Cover 1	17H06228 A	E03093	1	1	1	
22	Valve Cover 2	17H06229 A	E03094	1	1	1	
23	Thermistor	17B24597 K	P23508	1	1	1	THM8: for Compressor (Td1)
24	Thermistor	17C59664 D	P23504	3	3	3	THM17, 11, 10: for Piping (Te, Tg, Tchg)
25	Thermistor	17C59664 G	E00764	1	1	1	THM23: for Piping (TBg)
26	Accessory Pipe	XEK37178 A	E03131	1			
26	Accessory Pipe	XEK37178 B	E03132		1		
26	Accessory Pipe	XEK37178 C	E03133			1	
27	Screw	17D30320 F	P25673	6	6	6	SUS, M6
28	Screw	17E19003 B	E03135	4	4	4	for Coil
29	Screw	17H12637 A	P25678	17	17	17	SUS, M5



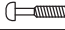

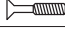

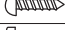

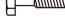



A	Truss Head Tapping Screw		F	Stud Bolt	
B	Round Head Screw		G	Nut	
C	Flat Head Screw		H	Washer	
D	Pan Head Tapping Screw		J	Spring Lock Washer	
E	Hexagon Head Bolt		K	Toothed Lock Washer	

NOTE:

The unchromated coating is applied to iron and steel material for the unspecified materials of the bolt and screw.



A	Truss Head Tapping Screw		F	Stud Bolt	
B	Round Head Screw		G	Nut	
C	Flat Head Screw		H	Washer	
D	Pan Head Tapping Screw		J	Spring Lock Washer	
E	Hexagon Head Bolt		K	Toothed Lock Washer	

NOTE:

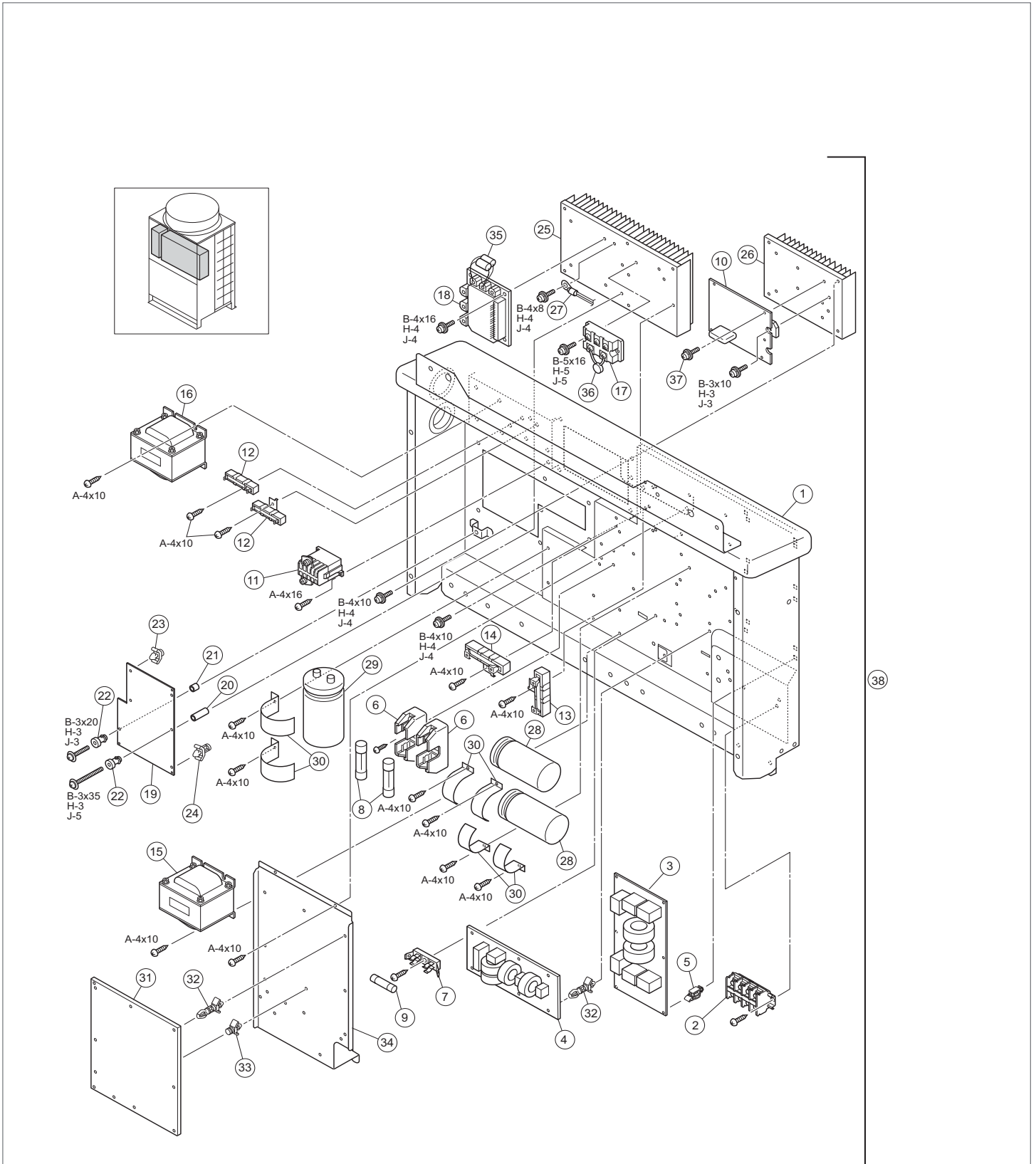
The unicomated coating is applied to iron and steel material for the unspecified materials of the bolt and screw.

PRODUCT CODE	7E332008
	7E332009
	7E332010
	7E332011
	7E332012
MODEL NAME	RAS-5FSXNHE
	RAS-6FSXNHE
	RAS-8FSXNHE
	RAS-10FSXNHE
	RAS-12FSXNHE

No.	DESCRIPTION	DWG No.	PART No.	Qty	Qty	Qty	Qty	Qty	REMARKS
1	Electrical Box Plate	XEK12242 A	E03908	1	1	1	1	1	Steel Plate Only
2	Terminal Board	XEK34375 A	E02519	1	1	1			TB1: 600V, 50A
3	Noise Filter	17B41798 A	P28595	1	1	1	1	1	NF1: 4LFB-22930-2F
4	Noise Filter	17B42008 A	P28596	1	1	1	1	1	NF2: LFB-14930-3MA
5	Holder	17G07802 A	P20985	6	6	6	6	6	
6	Fuse Holder	17C68732 A	P24729	2	2	2	2	2	EF1, 2 (for Inv. Comp.)
7	Fuse Holder	17C68766 A	P24114	1	1	1	1	1	EF11 (for Fan)
8	Fuse	XEK32372 B	P24776	2	2	2	2	2	EF1, 2: 40A, Cartridge Fuse (for Inv. Comp.)
9	Fuse	17F01759 G	P28602	1	1	1	1	1	EF11: 20A, Cartridge Fuse (for Fan)
10	Fan Controller	17B41624 B	E03159	1	1	1	1	1	FANM: PV092
11	Magnet Switch	17B28277 B	P24721	1	1	1	1	1	CMC1: Fuji Electric, FC-0/SP
12	Resistor	17B33595 A	P26062	2	2	2	2	2	RS1, 2: 20SHT500JA187
13	Resistor	17B41920 A	P28599	1	1	1	1	1	R1: 40SH, 6.3Ω
14	Resistor	17B41920 B	P28600	1	1	1	1	1	R2: 40SH, 10.5Ω
15	Reactor	17F05484 A	P28601	1	1	1	1	1	DCL2: 3.0mH, 10A (for Fan)
16	Reactor	17B43206 A	P27217	1	1	1	1	1	DCL1: 1.0mH, 30A (for INV.)
17	Diode Module	17B40192 A	P27214	1	1	1	1	1	DM: PT50SN16
18	Transistor Module	17B37211 A	P27215	1	1	1	1	1	IPM: 6MBP50RA120-55
19	PCB for Inverter	17B41615 B	P29549	1	1	1	1	1	PCB2: PV093
20	Collar	17G15233 B	P20986	2	2	2	2	2	
21	Collar	17G15233 C	P26099	1	1	1	1	1	
22	Bush	17G15232 A	P20987	3	3	3	3	3	
23	Spacer	XEK34316 B	E01617	1	1	1	1	1	
24	Spacer	XEK34316 C	E01616	1	1	1	1	1	
25	Radiation Fin 1	17F03877 A	E03161	1	1	1	1	1	
26	Radiation Fin 2	17F03878 A	E03162	1	1	1	1	1	
27	Thermistor	17H07888 A	P28498	1	1	1	1	1	THM: for Inverter Fin
28	Capacitor	17B37350 B	P28597	2	2	2	2	2	CB1, 2: 450V, 4700μF (for INV.)

PRODUCT CODE	7E332008
	7E332009
	7E332010
	7E332011
	7E332012
MODEL NAME	RAS-5FSXNHE
	RAS-6FSXNHE
	RAS-8FSXNHE
	RAS-10FSXNHE
	RAS-12FSXNHE

No.	DESCRIPTION	DWG No.	PART No.	Qty	Qty	Qty	Qty	Qty	REMARKS
29	Capacitor	17B41966 B	E03163	1	1	1	1	1	CB3: 450V, 2700µF (for Fan)
30	Saddle	XEK31179 C	E02059	6	6	6	6	6	
31	Printed Circuit Board	17B43062 K	E03831	1	1	1	1	1	PCB1: PO113
32	Spacer	XEK30992 C	E03165	15	15	15	15	15	
33	Spacer	XEK34316 A	P21189	2	2	2	2	2	
34	PCB Plate	XEK24264 A	E03166	1	1	1	1	1	
35	Capacitor	17H16964 A	E03474	1	1	1	1	1	CS1, CS2
36	Noise Suppressor	17G85788 D	E03909	1	1	1	1	1	ZNR
37	Screw	17H09678 A	E03168	5	5	5	5	5	
38	Electrical Box	XEK01384 A	E04023	1					Components+Harness+Plates
38	Electrical Box	XEK01384 B	E04024		1				Components+Harness+Plates
38	Electrical Box	XEK01384 C	E04025			1			Components+Harness+Plates
38	Electrical Box	XEK01384 D	E04026				1		Components+Harness+Plates
38	Electrical Box	XEK01384 E	E04027					1	Components+Harness+Plates



A	Truss Head Tapping Screw		F	Stud Bolt	
B	Round Head Screw		G	Nut	
C	Flat Head Screw		H	Washer	
D	Pan Head Tapping Screw		J	Spring Lock Washer	
E	Hexagon Head Bolt		K	Toothed Lock Washer	

NOTE:

The unicromated coating is applied to iron and steel material for the unspecified materials of the bolt and screw.