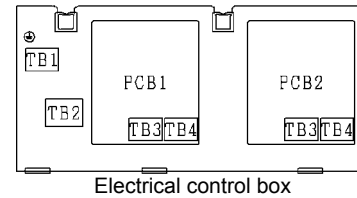
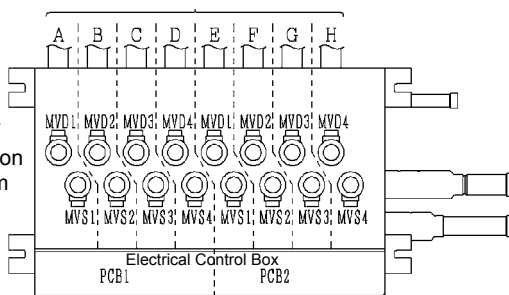


Arrangement of electronic expansion valves (view from above)



| Mark  | Torque tighten the terminal | Screw Size | Indoor unit   | Wiring position             | Indoor unit   | Wiring position             |
|-------|-----------------------------|------------|---------------|-----------------------------|---------------|-----------------------------|
| TB1   | 1.0~1.3 (Nm)                | M4         | Indoor unit A | TB3-3 MVD 1<br>TB3-4 MVS 1  | Indoor unit E | TB3-3 MVD 1<br>TB3-4 MVS 1  |
| TB2   | 1.0~1.3 (Nm)                |            | Indoor unit B | TB3-5 MVD 2<br>TB3-6 MVS 2  | Indoor unit F | TB3-5 MVD 2<br>TB3-6 MVS 2  |
| TB3.4 | 0.7~1.1 (Nm)                | M3.5       | Indoor unit C | TB4-7 MVD 3<br>TB4-8 MVS 3  | Indoor unit G | TB4-7 MVD 3<br>TB4-8 MVS 3  |
|       |                             |            | Indoor unit D | TB4-9 MVD 4<br>TB4-10 MVS 4 | Indoor unit H | TB4-9 MVD 4<br>TB4-10 MVS 4 |

| Mark               | Name                       | Remark                           |
|--------------------|----------------------------|----------------------------------|
| PCB1,2             | Printed circuit board      |                                  |
| TB1                | Terminal Block             | for Power Supply                 |
| TB2                | Terminal Block             | for Communication (Outdoor unit) |
| TB3, 4             | Terminal Block             | for Communication (Indoor unit)  |
| MVD <sub>1-4</sub> | Electronic Expansion Valve |                                  |
| MVS <sub>1-4</sub> | Electronic Expansion Valve |                                  |
| NF1                | Noise filter               |                                  |
| EFR <sub>1</sub>   | Fuse                       |                                  |
| LED1               | LED(Red)                   | Power status                     |
| LED2               | LED(Red)                   | DC Power Status                  |
| LED3               | LED(Yellow)                | Communication (Outdoor Unit)     |
| LED4~7             | LED(Yellow)                | Communication (Indoor Unit)      |
| LED10~17           | LED(Green)                 |                                  |
| DSW1~3             | DIP Switch                 |                                  |
| DSW4               | DIP Switch                 | Communication (Outdoor Unit)     |
| DSW5~8             | DIP Switch                 | Communication (Indoor Unit)      |
| CA                 | Capacitor                  |                                  |